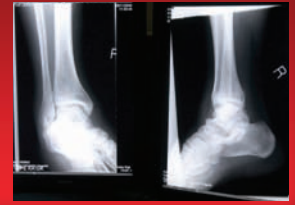


The Spark

NHS

**National Institute for
Health Research**

NIHR CLAHC
Leicestershire, Northamptonshire and Rutland (LNR)



NIHR CLAHC
Leicestershire, Northamptonshire and Rutland (LNR)

“Working together to conduct and implement high quality research to improve the health of the population of Leicestershire, Northamptonshire and Rutland”

In this issue



Opportunities & Challenges Presented by the Public Health White Paper

- Simon Baines, CLAHC Co-ordinator for NHS Leicestershire County & Rutland

On 9 February 2011 the Communities for Health in the East Midlands Network hosted a conference at the Trent Vineyard in Nottingham to highlight opportunities and challenges presented by the white paper; ‘Healthy Lives, Healthy People.’

CLAHC Co-ordinators Louise Lester (NHS Leicester City) and Simon Baines (NHS Leicestershire County & Rutland) attended the event and presented information about how CLAHC is supporting Public Health directorates within primary care trusts across LNR on a joint stand with Nottinghamshire, Derbyshire and Lincolnshire CLAHC.

Over 300 delegates from a variety of sectors attended the event and received presentations from NHS, Local Authority and Department of Health speakers. Battling health inequalities within, and between populations is a

key theme of Healthy Lives, Healthy People and several speakers identified that close working partnerships between local authorities containing public health functions and the GP commissioning consortia will be essential in delivering on this agenda.

Rachel Quinn, Chief Executive of One East Midlands, spoke on the role of the community and voluntary sector (CVS) in health and social care. Risks to the CVS as a consequence of the transition of public health functions to local government were discussed, especially given that CVS may not be represented on future health and wellbeing boards. Failure



Public Health white paper

to include the CVS in these discussions may jeopardise the ability of this sector to contribute to initiatives such as 'The Big Society.' Public health functions returning to local authorities were otherwise framed positively overall during the event, although concerns were raised about the complexities of integrating such large health service functions in such a challenging financial climate.

Pete Bungard, Chief Executive of Gloucestershire County Council, spoke of his delight at public health functions returning to local authorities; exactly where they were based before 1974. With such enthusiasm from senior individuals within local government the public health transition stands every chance of succeeding and streamlining public health decision making. Indeed, although health and social care functions of NHS and local authorities have been geographically separated over the past 35 years, close working relationships have been maintained through shared functions such as the Joint Strategic Needs Assessment (JSNA). JSNA's became a statutory requirement for primary care trusts and local governments in April 2008 and function to highlight current and future health and wellbeing needs of local populations to inform the strategic operating of primary care trusts and local governments.

Evidence-based interventions were suggested by several speakers to be vital to the future of the JSNA process in a challenging financial climate. This may be an area where CLAHRCs could facilitate and consequently play an important role in optimising the health and wellbeing of local populations across LNR. Leicestershire County Council is one of two national Pathfinder local authorities that is already in the process of integrating the public health function from NHS Leicestershire County and Rutland PCT. Therefore, this will provide LNR-CLAHRC with an early insight into the relationships between local authorities, GP commissioning consortia and local NHS Trusts and an opportunity to begin building relationships with new important partners.

Demystifying public involvement in research – One thought

- Raksha Pandya, Regional Patient & Public Involvement in Research Lead, De Montfort University, Centre for Social Action, NIHR RDS East Midlands



Public health research & public involvement

When thinking about public health, immediately you may ask - what is it? What's its goal? Well Winslow defines the concept "public health" as,

"the science and art of preventing disease, prolonging life and promoting health through the organized efforts and informed choices of society, organizations, public and private, communities and individuals" (Winslow 1920).

So in reality what does that mean? I think of summer skin care adverts or posters for substance misuse, and the Jamie Oliver school meals campaign. Absolutely all of us are affected by public health issues and most of us will engage with public health campaigns at some point in our lives, even if we don't think we are! Engaging with such campaigns could happen in many ways; through fundraising, getting involved in awareness-raising through talks and maybe giving out leaflets at local supermarkets...not so much of a mystery anymore! But when you add research to it, does that change how you understand the concept? The idea behind public involvement in research remains the same.

"Doing research with or by people who use services, not to, about or for them" (INVOLVE- a national advisory group which supports greater public involvement in NHS, public health and social care research).

So combining INVOLVE's definition to public health seems that it means to invite people to get involved in public health research. The white paper on public health 'Healthy Lives, Healthy People', states the importance of research:

"Public health evaluation and research will be critical in enabling public health practice to develop into the future and address key challenges and opportunities, such as how to handle the wider determinants of health and how to use behaviour change science to support better practice. At the basis of this is the need to try new ideas and innovate in a structured manner." (Healthy Lives, Healthy People 2010 pg. 69)

So you may well have ideas or ways to prevent disease or prolong life within your community and you might know of how to research it or tackle it.

For more information on patient and public involvement in research please contact Raksha: rpandya@dmu.ac.uk



Raksha Pandya

Evaluation of Acute Admissions Guidelines for Primary Care in Leicestershire County and Rutland

- Glenda Augustine, Specialty Registrar Public Health, NHS Leicestershire County and Rutland/Leicestershire County Council

Emergency admissions make a significant contribution to healthcare costs as, particularly for individuals with long term conditions; they result in either short hospital stays with subsequent frequent readmissions or protracted lengths of stay. Evidence-based interventions were reviewed and acute admissions guidelines were produced for primary care in four defined clinical and demographic groups; Chronic Obstructive Pulmonary Disease, Heart Failure, End of Life Care and Chronic Frail Elderly.

It has been acknowledged that general practitioners in Leicestershire County and Rutland may already be undertaking some or all of the recommended interventions in one or more of the four areas prior to guidelines production. However, in view of the variation in emergency admission rates between practices and localities, the central aim of this initiative was to increase the number of general practitioners and practices implementing these interventions across both each locality and Primary Care Trust wide. The overall average impact of guidelines implementation may be demonstrated through a reduction in the number of emergency admissions for patients in the four defined groups.

The guidance was researched and collated by the NHS Leicestershire County and Rutland (NHS LCR) Public Health Department with advice from the Department of General Practice at the University of Leicester and clinical input from general practitioners, secondary care clinicians and medicines management. Clinical input has been central to determine the feasibility and acceptability of the interventions to the general practice community and their likely impact locally on emergency admissions. The guidelines were presented, discussed and approved by the seven general practice locality meetings in Leicestershire County and Rutland and the Practice Based Commissioning group and subsequently circulated to all GPs in November 2010.

A collaborative evaluation of the guidelines is currently in progress between NHS LCR and CLAHRC and involves semi-structured interviews of approximately 20 general practitioners to establish:

- how useful general practitioners found the guidelines approach
- how effective a targeted approach to reducing acute admissions is likely to be
- how practical the guidelines might be to implement

The study team aims to report their findings in April 2011. If this study demonstrates positive outcomes then this



(l-r) Shane Mistry, Tim Daniel, Glenda Augustine, Richard Baker, Simon Baines.
Missing from group - Lorraine Pollard, Graham Martin

may foster similar multidisciplinary collaborative working between CLAHRC and NHS LCR to formulate specific, coordinated, evidence-based healthcare strategies in the future to improve clinical care for patients.

A dissemination event for the CLAHRC acute admissions study and associated work is currently being arranged for later this year (date tbc). If you would like further information on this event please contact louise.lester2@leicestercity.nhs.uk.

CLAHRC Review Update

- Kevin Quigley, Project Manager

CLAHRC-LNR is going through a major project review. Last year we invited a peer review group to assess our work known as the EAR (External Advisory Review:). The Review gave credit to the good work we are doing but also identified areas of improvement.

In response we have set up a series of task groups led by CLAHRC staff to help us deliver our aims. The Review identified two areas where we could improve our service to our NHS partners which are: (i) Training & Education and (ii) preparing and distributing evidence summaries. In response we are currently holding meetings with key NHS staff involved in training and evidence to see how we can support them.

The work will be completed by the end of April. If you are interested in the CLAHRC Review please contact your local co-ordinator or the Project Manager Kevin Quigley on kmq3@le.ac.uk

COURSES, TRAINING & EVENTS

Date / Time	Title	Location	Booking
04 April 2011 12:30 - 2pm	NHS Northamptonshire Provider Services Research Roadshow	Willowbrook Health Centre, Education Room, Corby, Northamptonshire	Drop-in session
04 May 2011 6.00pm - 8.00pm	HERO dissemination event - info on HERO clahrc-lnr.nihr.ac.uk/hero	University of Leicester	Michelle Ollerton 01162523277 mo111@le.ac.uk
09 May 2011 9.30am - 4.30pm	Introduction to Good Clinical Practice (GCP)	Room 4, Sunley Management Centre, Park Campus, Boughton Green Road, Northampton NN2 7AL	Michele Eve CLRN Taskforce Research Training Officer michele.eve@uhl-tr.nhs.uk Kirti Vaghela CLRN Research Training Officer kirti.vaghela@northants.nhs.uk
16 - 20 May 2011	Searching the qualitative research literature for your research	E-learning	Claire Burchnell 0116 252 3276 cb269@le.ac.uk
07 - 08 June 2011	HSRN and SDO Network Annual Conference	ACC Liverpool	0844 800 5987 eventbookings@nhsconfed.org
14 -15 June 2011 13 July 2011	RDS for the East Midlands 3 day learning event - 'Designing Applied Health Research: From bid to research proposal	University of Nottingham	Karen Taylor 0115 846 6907 karen.taylor@nottingham.ac.uk

Northamptonshire Provider Services Libraries

- Gary Meades, Northants Library Services Manager



Do you need help in finding the latest research evidence? Do you want to learn about how and where to search for high quality information?

Northamptonshire Library Services can help furnish you with the information you need. We go well beyond the traditional role of providing books and journals, although we do that too! We offer a full enquiry and literature searching service to all NHS staff and several ways to keep up to date with the very latest healthcare news.

A whole host of high quality information resources are available online. There is a large collection of databases, e-textbooks and journals and our on-line catalogue enables you to search the library collections of nearly 30,000 items, all without leaving your office (or even your seat!). You may find all this technology a little daunting

but we can help with that too. We run a variety of training workshops across the county from basic Internet skills, web sites to support evidence based practice to using databases for literature searching, and we can even come to you.

We have also launched a new course for 2011 – An Introduction to Critical Appraisal Skills which is ideal for the budding researcher who wants to make sense of published studies.

To find out more visit our Web site: www.library.northants.nhs.uk



Gary Meades

Finding the evidence

Northamptonshire Library Services	www.library.northants.nhs.uk
The UHL Library Service	www.uhl-library.nhs.uk
The Clinical Sciences Library	www.le.ac.uk/li/clinical/index.html